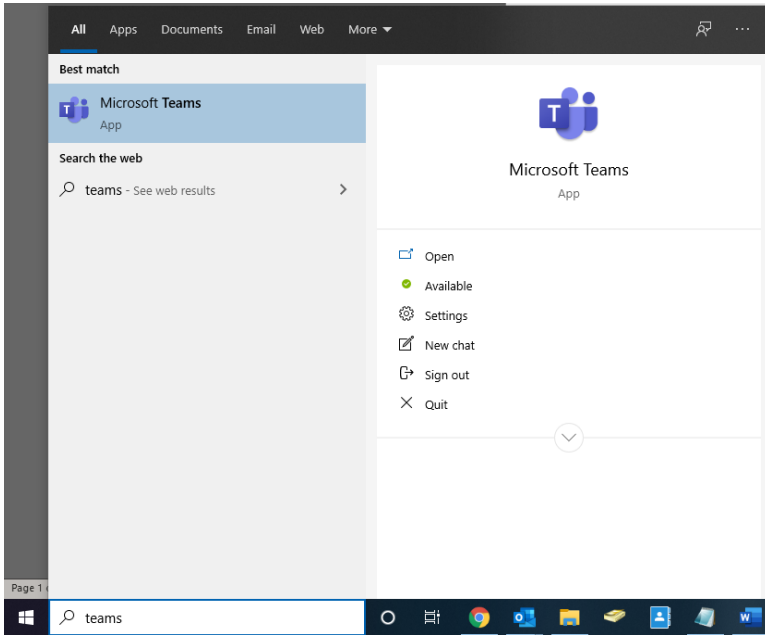


MS Teams Instructions

To sign into Teams

Open Teams.



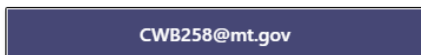
Click "Use another account".



Welcome to Microsoft Teams!

Chat and collaborate with your coworkers in one app. [Learn more](#)

Continue as:



Enter your @mt.gov email address.



Enter your work, school, or Microsoft account

[Learn more](#)

Enter your C# and State email/SABHRS password.

